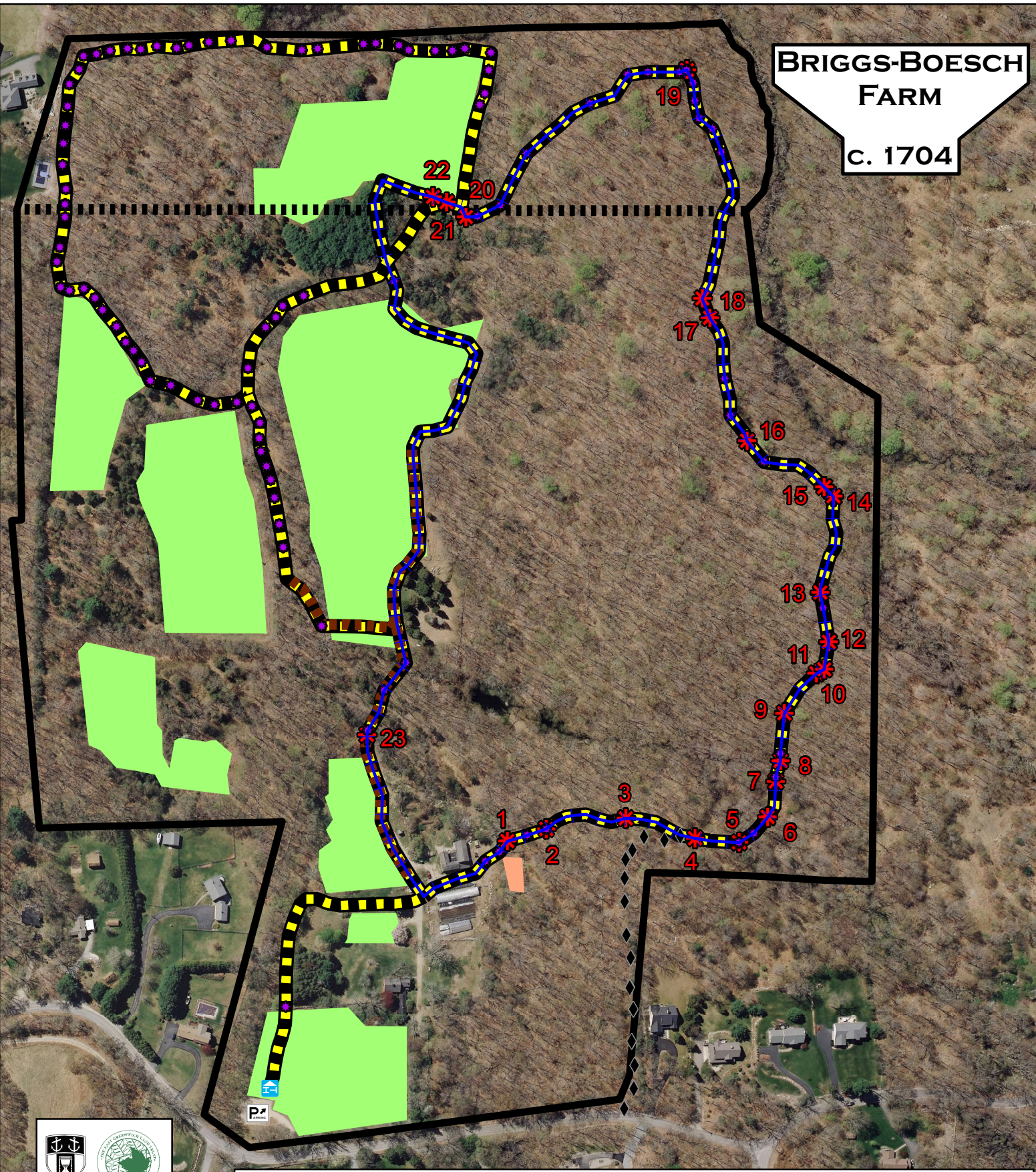


BRIGGS-BOESCH FARM

c. 1704



This map is not the product of a Professional Land Survey. It was created by the Town of East Greenwich for general reference, informational, planning and guidance use, and is not a legally authoritative source as to location of natural or manmade features. Proper interpretation of this map may require the assistance of appropriate professional services. The Town of East Greenwich makes no warranty, express or implied, related to the spatial accuracy, reliability, completeness, or currentness of this map.

Key

- Points of Interest (stone walls, boulders, ice house, water features, scenic view)
- Trail Markers
- Farm Road
- Trailhead
- Briggs Cemetery
- Swazek Loop
- Private Access Easement
- Fields
- Trail
- Parking Lot
- NK / EG Town Line

0 250 500

Feet