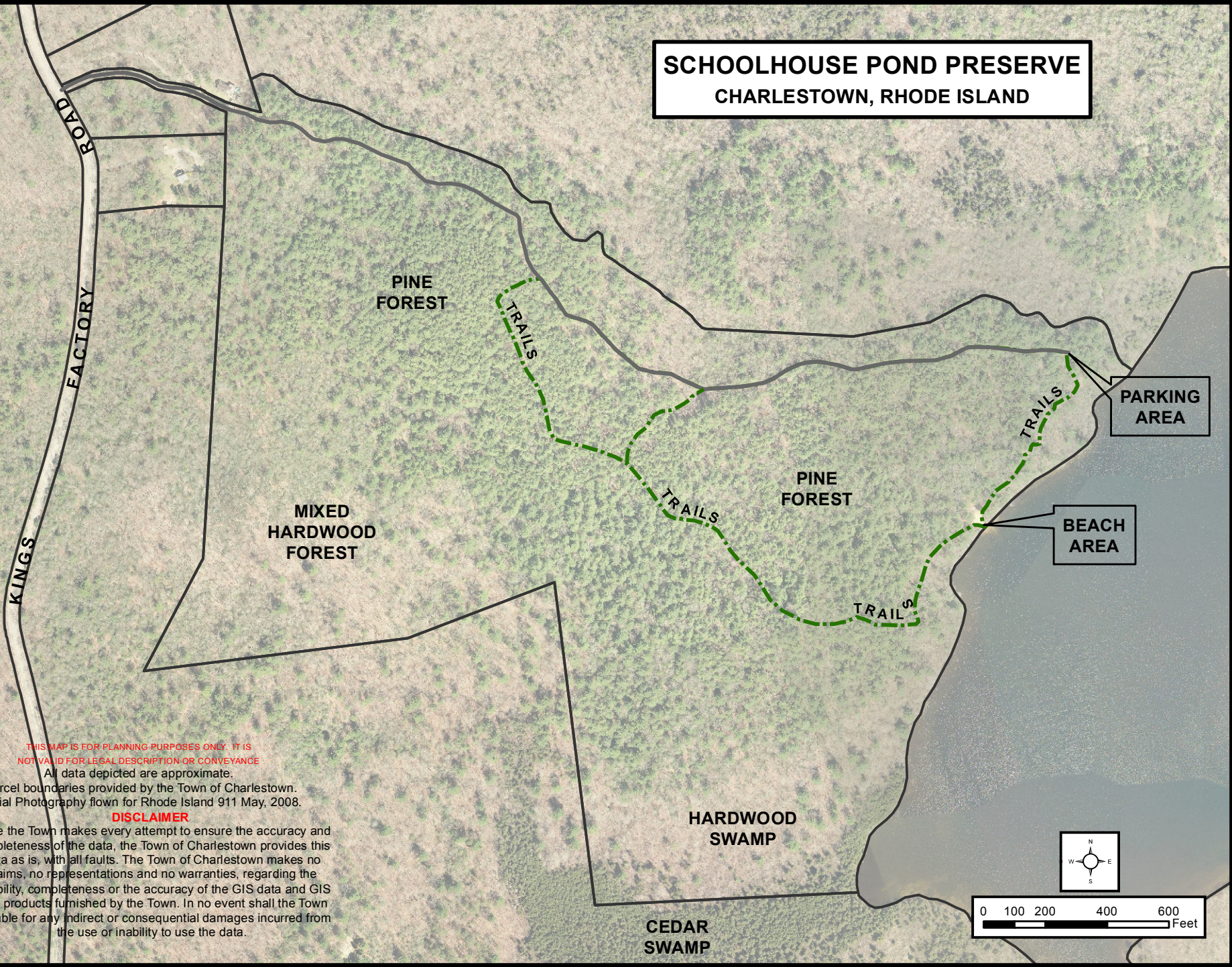


# SCHOOLHOUSE POND PRESERVE CHARLESTOWN, RHODE ISLAND



THIS MAP IS FOR PLANNING PURPOSES ONLY. IT IS  
NOT VALID FOR LEGAL DESCRIPTION OR CONVEYANCE

All data depicted are approximate.

-Parcel boundaries provided by the Town of Charlestown.  
-Aerial Photography flown for Rhode Island 911 May, 2008.

## DISCLAIMER

While the Town makes every attempt to ensure the accuracy and completeness of the data, the Town of Charlestown provides this data as is, with all faults. The Town of Charlestown makes no claims, no representations and no warranties, regarding the reliability, completeness or the accuracy of the GIS data and GIS data products furnished by the Town. In no event shall the Town be liable for any indirect or consequential damages incurred from the use or inability to use the data.