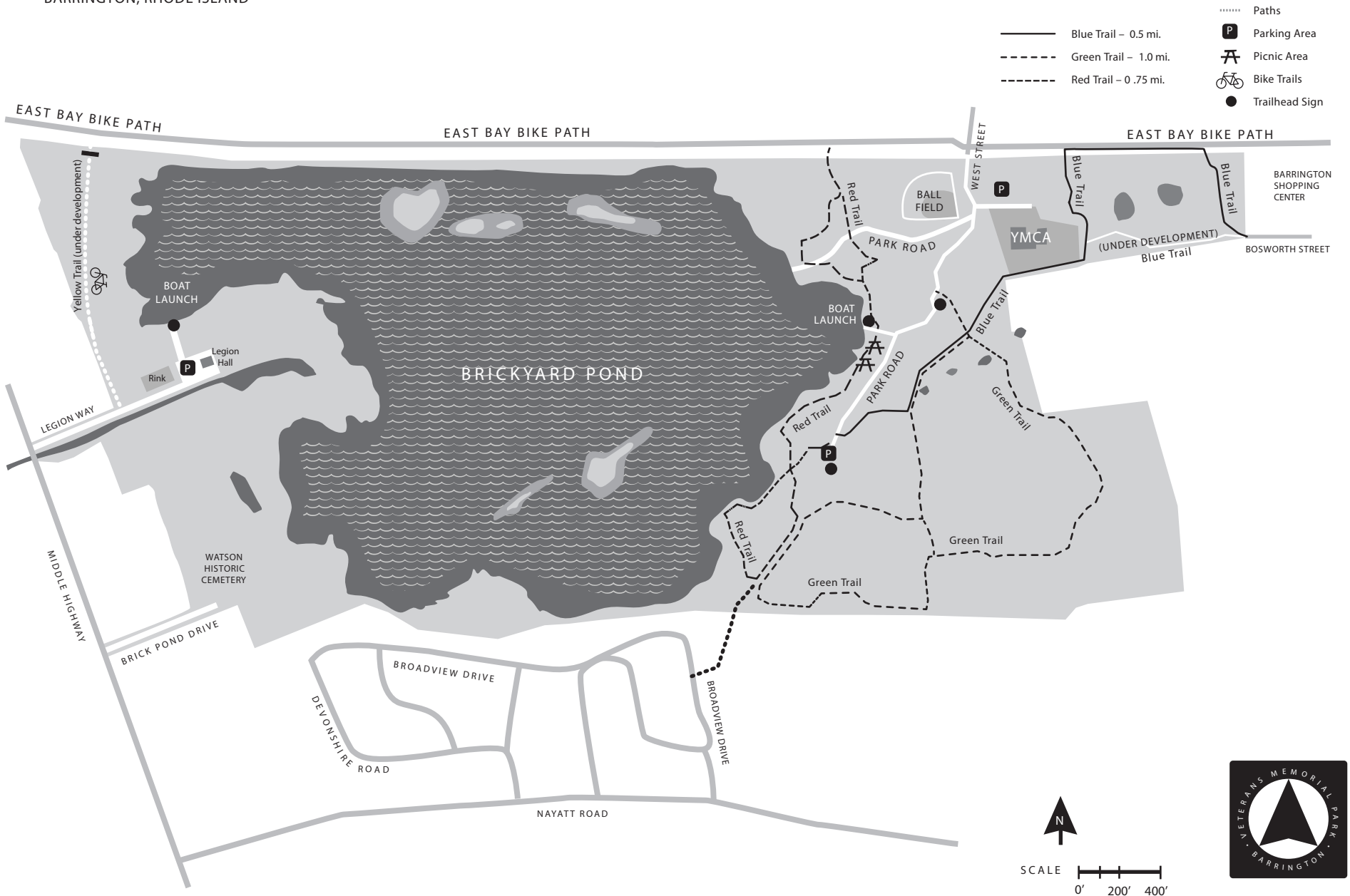


VETERANS MEMORIAL PARK

BARRINGTON, RHODE ISLAND



PARK RULES



Park is open from dawn to dusk.



Trashcans are not provided. Help keep our park cleaner – carry out the litter you find.



Pets on leashes always. Please clean up after your pet and dispose properly.



Swimming is strictly prohibited, hazardous underwater structures.



No skating on pond. Unstable ice due to saltwater and springs.



Bicycles on designated trails only.



Respect wildlife and vegetation, do not disturb.



Hunting is strictly prohibited.



Fishing allowed per regulations.



Electric and non-motorized boats only.



Please report downed trees, etc. Call 401-247-1907



No open fires or camping.

Thank you for doing your part!

If you are interested in being involved with the park please contact Barrington Town Hall at 401-247-1900.



You may notice...



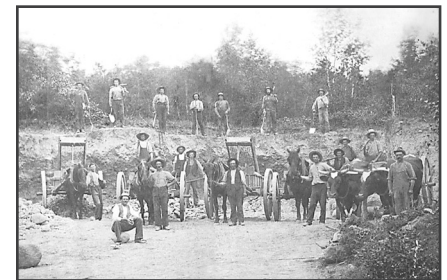
BELTED KINGFISHER
Photo by Mike Baird



EASTERN WHITE PINE
Photo by Steve Baukauf

WELCOME

Established in 1946 as a public recreation and conservation area by the Town of Barrington, the park was named to honor veterans. The park land stretches over 230 acres including the 84-acre pond named Brickyard because this was the site of a local brick-making industry started in 1720 by Matthew Watson and continued until 1943. The historic Watson cemetery where Matthew is buried is located within the southeastern boundary of the park. The excavated clay beds eventually filled with water from underground springs forming the beautiful pond. Connected to Narragansett Bay by a canal, the area is an important herring spawning ground.



BARRINGTON BRICKWORKERS c.1913
Barrington Preservation Society Archives